



# iPF9100/8100

## Quick Product Overview



### A BROAD PALLET OF 12 COLORS

- A wide gamut for vibrant colors, subtle mid-tones, smooth gradients, and fine details
- Four monochromatic shades deliver dramatic contrast and truer gray tones

### ARCHIVAL LUCIA™ PIGMENT INKS

- Color stable, light-fast, and water-resistant
- Reformulated monochrome inks reduce graininess, resist scratches, and minimize bronzing



LUCIA Pigment Inks

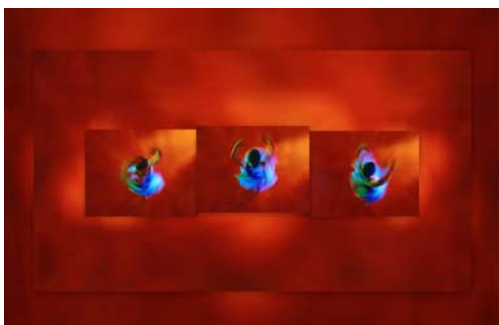


Photo credit: ©Parish Kohanim

### ULTRA-HIGH QUALITY IMAGING

- High-resolution output up to 2400 x 1200 dpi with tiny 4pl droplets of ink
- Built-in calibration for consistent reliable results

### MAXIMUM PRODUCTIVITY

- Borderless printing reduces trimming time
- Two 1.07" print-heads, with a total of 30,720 nozzles
- Built-in 80GB hard drive for data storage and faster reprints
- Sub-ink tank system enables on-the-fly ink replacement

### SOFTWARE SOLUTIONS

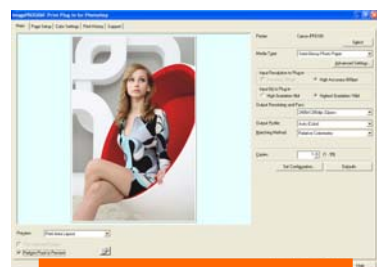
- Digital Photo Front-Access
- Print Plug-in for Adobe® Photoshop®
- Print Plug-in for Digital Photo Professional
- PosterArtist 2007 (optional)



Dual Print-Head System



L-COA Image Processor



Print Plug-in for Photoshop

# FEATURES



**12-Color LUCIA Ink Set** – The imagePROGRAF iPF9100 and iPF8100 have a 12-color, pigment-based ink-set featuring red, green and blue inks that allow for prints that are noticeably different than output from the average CMYK printer. Black, Matte Black, Gray and Photo Gray have been reformulated to optimize black ink density for exceptional monochrome output, with reduced bronzing and better ink adhesion for improved scratch resistance.

**Kyuanos** – These printers achieve uniform high-quality color with Canon's development of *Kyuanos*, a high-precision color management system that delivers consistent and accurate color under different viewing conditions such as fluorescent lights, incandescent lights, or sunlight.

**80GB Internal Hard Drive** – The imagePROGRAF iPF9100 and iPF8100 have a large hard drive built right into the printer allowing print jobs to be saved for easy reprinting with no time wasted. The hard drive frees up the client PC by saving the print drive during operation.

**Built in Calibration** – These printers can recalibrate themselves to the original optimal factory settings, providing users with an easy solution to achieve consistent and accurate color output from print to print, and machine to machine.

<b>Printer Width</b>	iPF9100: 60" iPF8100: 44"
<b>Printing Technology</b>	Bubble Jet™ (Thermal Inkjet)
<b>Ink Type</b>	LUCIA Ink Set: (12-Color Pigment-based inks) R, G, B, C, PC, M, PM, Y, BK, GY, PGY, MBK.
<b>Max Resolution</b>	2400 x 1200 dpi
<b>Ink Tank Size</b>	330ml/Available 700ml
<b>Print Heads</b>	Two, End-user replaceable, <i>PF-03</i>
<b>Droplet Size</b>	4 Picoliter (fixed)
<b>Nozzles</b>	30,720 total, 2,560 nozzles per color
<b>Hard Drive/Memory</b>	iPF9100: 80GB HDD/640MB RAM iPF8100: 80GB HDD/384MB RAM
<b>Standard Interface</b>	USB 2.0 & 10/100-Base T/TX
<b>Optional Interface</b>	IEEE1394 (FireWire Card)
<b>Borderless Printing</b>	All four sides with specified roll sizes and media
<b>Media Thickness</b>	0.07mm – 0.8mm
<b>Driver Software</b>	Windows® (2000, XP, Vista 32/64 bit), Macintosh® (OS9, OS10)
<b>Print Speeds A0 Size**</b>	iPF9100: 4 minutes 4 seconds* iPF8100: 4 minutes 5 seconds*
<b>Included Software</b>	Print Plug-in for Photoshop® and Digital Photo Professional, Printer Driver Extra Kit (Free Layout, imageRUNNER Linking Function), Digital Photo Front-Access

**Unmatched Printing Speeds** – The integration of speed and quality is attained with two of Canon's strongest and latest technological achievements- the L-COA controller and the dual print head system.

**Clogged Nozzle Detection and Compensation** – These printers will automatically perform necessary cleaning and if the nozzle remains obstructed, they will reroute ink to other functioning nozzles to compensate for the clog.

## Software

**Print Plug-in for Adobe® Photoshop® & Digital Photo Professional** - These Plug-in's are true export modules, bypassing the operating system's 8-bit restriction, allowing for true 16-bit image processing, producing a much smoother, and more color accurate image. The Plug-in also has advanced monochrome controls, rendering intent settings, ICC profile selection, and much more. The print history function enables users to go back and apply their favorite color, profile and print settings to future jobs.

**Printer Driver 2007** – This Windows® and Macintosh® driver incorporates simplified page setup options, 1-touch borderless printing, expanded color settings, ICC profile options, imageRUNNER Enlargement Copy feature, and much more. The Free-layout (PC) and Auto Layout (Mac) feature enables nesting and custom layouts of images or files of nearly any type.

**Digital Photo Front-Access** – Designed for editing, laying out and printing photos easily to large format. Along with auto image retouching, support for JPEG and RAW images, and simple configuration of print settings, DPFA can easily incorporate your pictures into PosterArtist and Photoshop.

**Canon PosterArtist 2007 (Optional, Windows Only)** – Developed by Canon, PosterArtist 2007 is an easy to use, template-based poster creation application, designed with the Microsoft® Office™ skill level user in mind. It comes standard with a wide range of pre-designed templates and hi-resolution, royalty-free images.

\* Print speeds noted here are bench-mark testing results conducted by Canon Inc. Each print time stated here is actual measurement of sample image output speed and is not the maximum printer speed. The data does not include data transfer time. The print speed may vary depending on the data volume and size. The testing conditions are as follows: The print time is measured from the start of printing until the image is exited out from the printer. These tests were conducted with a Pentium®4 3.2GHz running Windows XP, 1GB RAM, USB 2.0, from Adobe® Photoshop 7.0, SCID No.5 (bicycle chart).

\*\* Paper fed from Roll on A0-sized [ (827 x 1033.8mm) ] paper, Heavyweight Coated Paper, printing at 1200 x 1200 dpi, Standard mode.