

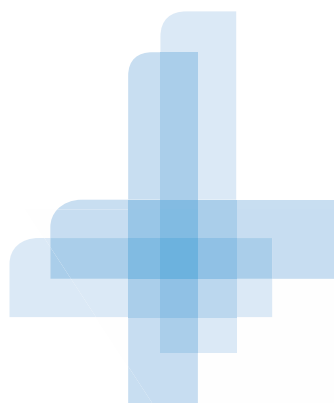


# EFI Colorproof eXpress



Proofing to Go – Smart, Easy and Quick!

Graphic Arts Solutions



# EFI Colorproof eXpress

## – Smart, Easy, Quick and Accurate

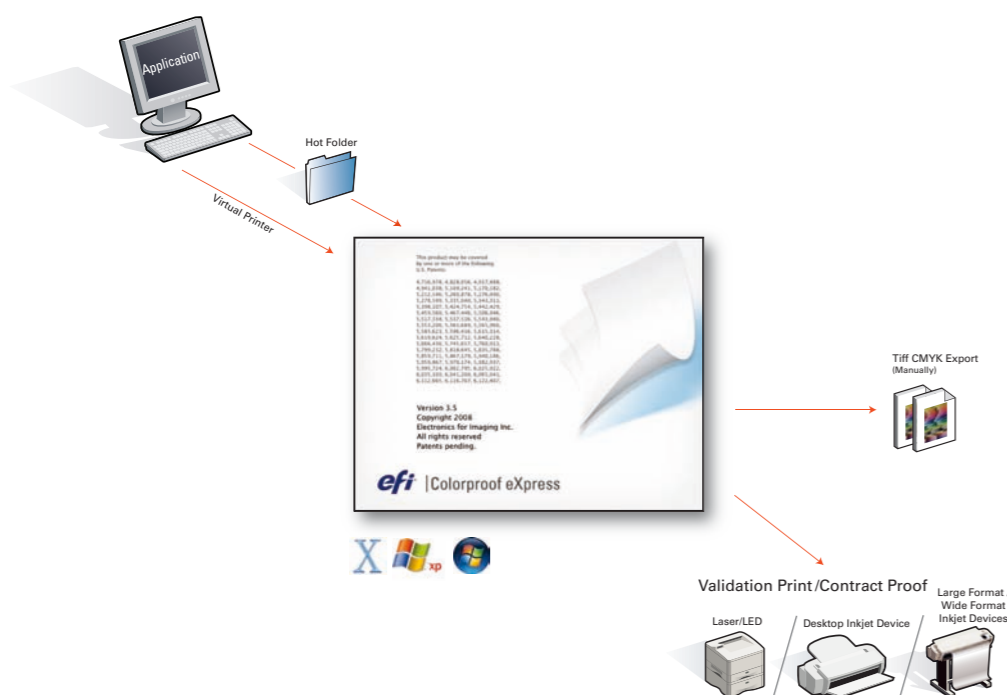
Whether you are a print buyer, a creative designer, working in a prepress house or in a small agency, creating proofs that predict your final print job is essential in today's demanding print environment. Also delivering high-quality with a limited budget can be a challenge when you need to keep an eye on the bottom line.

EFI Colorproof™ eXpress is a new entry-level proofing solution that provides high quality proofing results. The solution is perfect for small operations with limited budgets because it enables even your most inexperienced user to provide validation prints and contract proofing out-of-the-box quickly, easily and effectively.

### Simplify Your Process

Proofing has long been seen as the domain of experts with extensive training and years of experience. Colorproof eXpress provides a simple solution that even novice users can operate. Set up wizards help you license, register and set up, giving you an efficient software RIP to do validation printing and contract proofing on inkjet, laser or LED printers.

Predefined print modes for proofing, photo and black/white printing as well as the one-click spot colour handling underline the focus on ease-of-use. EFI Colorproof eXpress is Proofing to Go!



## Benefit from Colorproof eXpress' many advantages:

### No Downtime for Installation or Training

For busy operations, Colorproof eXpress minimizes downtime for installation, setup or training. Unlike other RIP solutions which have extensive installation and setup procedures, Colorproof eXpress has set up wizards to help you easily license, register and set up on your Macintosh® or Windows® operating system.

### Easy for Everybody to Use

Everybody in your organization can use Colorproof eXpress easily and meet your customers' high standards quickly. Colorproof eXpress enables definitions of colour and printing preset according to your requirements and even has pre-defined print modes for proofing, photo and black and white printing. It also comes with intuitive one-click spot colour handling.

### Intuitive Graphic User Interface

There's no ramp-up time with Colorproof eXpress. Its interface stands out with user-friendly design. The solution features a menu display of the most commonly used tasks for every day use.

### Focus on Standards

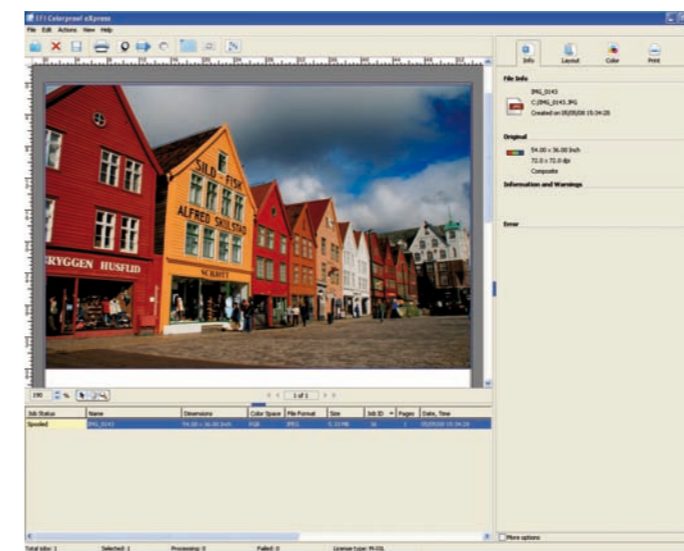
Your customers can rest assured that Colorproof eXpress supports open market standards for easy integration into open standards based workflows. The ICC compliant software RIP lets you provide validation printing and contract proofing on your inkjet, laser and LED printers quickly and efficiently.

### Remote Job Processing and Printing

With tight deadlines and quick turn around times, an effective communication between proof provider and customer is essential. The remote job processing and printing capability of EFI Colorproof eXpress enables onsite proofing at the print buyer location and significantly speeds up the proofing approval cycle.

### A Money Saving Solution

Like many of EFI's integrated solutions, entry-level Colorproof eXpress provides a higher return on investment. As your business grows, simply cross grade to EFI's high-end solution, EFI® Colorproof XF, which shares a similar user interface.



## Product Configurations\*

- EFI Colorproof eXpress M: Supports all printers up to 18" or A2.
- EFI Colorproof eXpress XL: Supports all 24" printers.
- EFI Colorproof eXpress XXL: Supports all printers bigger than 24".

\* Support of one printer per product configuration.

## Hardware Specs

Recommended system requirements

- Operating System: Windows, XP Home Edition, XP Professional, Win 2003 Server SP1 R2 standard, Windows Vista.  
Mac OS 10.4 and 10.5.
- Hardware: Windows: 2 GHz Pentium IV PC, 1024 MB RAM, 10/100 Mbit Network, One available USB port.  
Mac: Intel Mac native or Power PC G4, G5, 1024 MB RAM, 10/100 Mbit Network, One available USB ports.
- Supported Languages: English, German, Spanish, French, Italian, Japanese, Korean, and Chinese (simplified and traditional).

## Print to Win

EFI ([www.efi.com](http://www.efi.com)) is the world leader in colour digital print servers, and controllers; superwide format printers and inks, industrial inkjet printing systems and print management, Web-to-print and proofing solutions. EFI is dedicated to giving customers a competitive edge with award-winning, scalable solutions from creation to print that maximise productivity and increase profits. EFI maintains 23 offices worldwide.

Colorproof eXpress

Auto-Count, Bliss, Changing the Way the World Prints, ColorWise, Command WorkStation, DocBuilder, DocBuilder Pro, DocStream, EDOX, EFI, Fiery, the Fiery logo, Fiery Driven, the Fiery Driven logo, OneFlow, PrinterSite, PrintFlow, PrintMe, PrintSmith Site, Prograph, Proteus, RIP-While-Print, Setting the Standard in Digital Printing, Ultravu and VUTEk are registered trademarks of Electronics for Imaging, Inc. in the U.S. Patent and Trademark Office and/or certain other foreign jurisdictions. Bestcolor is a registered trademark of Electronics For Imaging GmbH in the U.S. Patent and Trademark Office. AutoCal, Balance, BioVu, BioWare, Build, ColorCal, Digital StoreFront, Estimate, Fiery Link, Fiery Prints, Fiery Spark, FreeForm, Hagen, Jetion, Logic, MicroPress, PhotoXposure, Printcafe, PrintSmith, PSI, PSI Flexo, Remoteproof, RIPChips, Scan, Screenproof, SendMe, Splash, Spot-On, UltraTex, UV Series 50, VisualCal, WebTools, the EFI logo, the Fiery Prints logo and Essential to Print are trademarks of Electronics for Imaging, Inc. Best, the Best logo, Colorproof, PhotoXposure, Remoteproof, and Screenproof are trademarks of Electronics For Imaging GmbH. All other terms and product names may be trademarks or registered trademarks of their respective owners, and are hereby acknowledged. © 2008 Electronics for Imaging

EFI Ltd, Stonebridge House, Padbury Oaks, Old Bath Road  
Longford, Middlesex UB7 0EW, United Kingdom

tel +44 [0]1753 283676  
fax +44 [0]1753 283636

[www.efi.com](http://www.efi.com)

D035.04.08\_UK